



1000 x

EUROPEAN  
ARCHITECTURE

BRAUN



01

### New Building Hotel, UBS Training Center Wolfsberg

This U-shaped building surrounds a large courtyard space and replaces a former inn. The three-story building connects seamlessly to the existing building, which houses a large, brick swimming pool and the central congress room. Horizontal bands of dark-gray concrete on the façade separate the stories from each other and emphasize the horizontal lines of the building. A gallery-like terrace on each floor gives the rooms an especially light, transparent quality. An open connection to outside space, the view of the lake and the green oasis of the interior courtyard, together with a simple, yet high-quality interior determine the visitor's sense of well-being.

01 North view | 02 View to courtyard | 03 Foyer and visitors' area | 04 Site plan



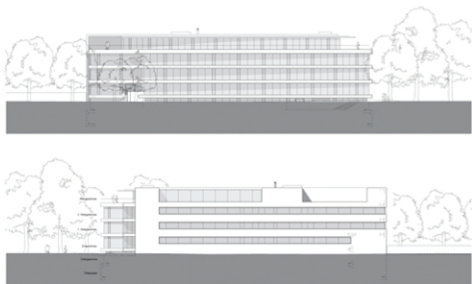
02



03



04



01



02

## Office Building Bellerive

This area presented various challenges due to the presence of light rail and tram lines, which cut through Zurich. These surround the project's location, which at the same time offers a beautiful view of the nearby lake and mountains. The proximity of the city and the transition between the development of the block and the road design has resulted in a building with two different faces. The side facing towards the train lines appears elongated, dark and closed. The side facing the sea opens out with horizontal concrete layers and a glazed façade. The floor plan follows the line of the light-railway and the curve of the tramlines. At night, the building is illuminated and the middle story seems to float above the ground light a lantern at the entrance to the city.

01 Elevations | 02 Façade towards railway | 03 Glass façade detail | 04 Northwest view at night



03



04